

# Clevis Fittings

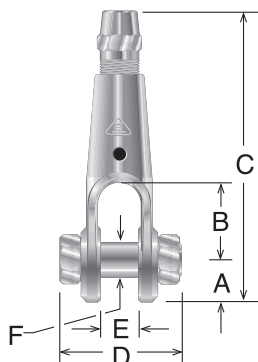
- See page 4 for additional info on breaking strength
- See page 16 for assembly kits
- Call technical service for custom designs



Clevis Fitting - Backstop Netting - Progressive Field - Cleveland, OH

## FORGED SERIES: Clevis Socket Fittings

Dimensions in inches

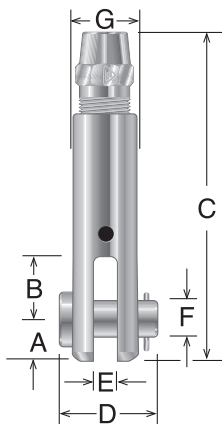


Rope Size	Self-Colored Steel	Zinc Plated Steel	Galvanized Steel	A	B	C	D	E	F	EIPS Breaking Strength*
1/4	IGD-125-N*	IGD-125-V*	-	9/16	1-3/8	4-1/4	1-23/32	17/32	1/2	6,800#
5/16	IGD-131-N*	IGD-131-V*	-	13/16	1-1/2	5-5/16	2-5/32	11/16	5/8	10,540#
3/8	IGD-137-N*	IGD-137-V*	-	13/16	1-1/2	5-5/16	2-5/32	11/16	5/8	15,100#
7/16	GD-143-N	-	GD-143-X	1-1/16	2	7-3/16	2-31/32	1	7/8	20,400#
1/2	GD-150-N	-	GD-150-X	1-1/16	2	7-3/16	2-31/32	1	7/8	26,600#
9/16	GD-156-N	-	GD-156-X	1-1/4	2-1/2	8-5/8	3-7/16	1-1/4	1	33,600#
5/8	GD-162-N	-	GD-162-X	1-1/4	2-1/2	8-5/8	3-7/16	1-1/4	1	41,200#
3/4	GD-175-N	-	GD-175-X	1-7/16	3	10-3/16	4	1-1/2	1-1/8	58,800#
7/8	GD-187-N	-	GD-187-X	1-5/8	2-5/8	11	4-3/8	1-17/32	1-1/4	79,600#
1	GD-199-N	-	GD-199-X	1-15/16	2-7/8	12-11/16	4-7/8	1-7/8	1-1/2	103,400#
1-1/8	GD-1112-N	-	GD-1112-X	2-3/16	3-5/16	17	5-5/8	1-7/8	1-13/16	130,000#
1-1/4	GD-1125-N	-	GD-1125-X	2-3/16	3-5/16	17	5-5/8	1-7/8	1-13/16	159,800#

\*Machined parts

## MACHINED SERIES: Clevis Socket Fittings

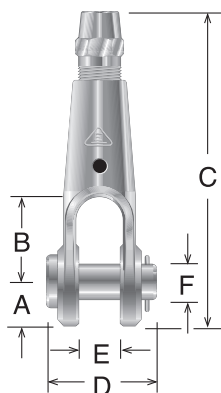
Dimensions in inches



Rope Size	Self-Colored Steel	Zinc Plated Steel	Stainless Steel	A	B	C	D	E	F	G	EIPS Breaking Strength*
1/16	ID-106-N	ID-106-V	IS-106	17/64	3/8	2-1/16	45/64	3/16	3/16	1/2	480#
3/32	ID-109-N	ID-109-V	IS-109	5/16	1/2	2-7/16	57/64	1/4	1/4	5/8	920#
1/8	ID-112-N	ID-112-V	IS-112	5/16	1/2	2-7/16	57/64	1/4	1/4	5/8	1,700#
5/32	ID-115-N	ID-115-V	IS-115	3/8	5/8	2-31/32	1-1/8	5/16	5/16	3/4	2,400#
3/16	ID-118-N	ID-118-V	IS-118	3/8	5/8	2-31/32	1-1/8	5/16	5/16	3/4	3,700#
7/32	ID-121-N	ID-121-V	IS-121	15/32	3/4	3-23/32	1-11/32	3/8	3/8	15/16	4,800#
1/4	ID-125-N	ID-125-V	IS-125	15/32	3/4	3-23/32	1-11/32	3/8	3/8	15/16	6,800#
9/32	ID-128-N	ID-128-V	IS-128	17/32	7/8	4-1/4	1-1/2	3/8	7/16	1-1/16	8,000#
5/16	ID-131-N	ID-131-V	IS-131	17/32	7/8	4-1/4	1-1/2	3/8	7/16	1-1/16	10,540#
3/8	ID-137-N	ID-137-V	IS-137	5/8	1	4-27/32	1-45/64	7/16	1/2	1-3/16	15,100#
7/16	ID-143-N	ID-143-V	IS-143	51/64	1-3/8	6-11/32	2-5/32	1/2	11/16	1-9/16	20,400#
1/2	ID-150-N	ID-150-V	IS-150	51/64	1-3/8	6-11/32	2-5/32	1/2	11/16	1-9/16	26,600#
9/16	ID-156-N	ID-156-V	IS-156	1-3/64	1-17/32	7-19/32	2-5/8	11/16	15/16	2	33,600#
5/8	ID-162-N	ID-162-V	IS-162	1-3/64	1-17/32	7-19/32	2-5/8	11/16	15/16	2	41,200#
3/4	ID-175-N	ID-175-V	IS-175	1-15/64	1-27/32	8-29/32	3	3/4	1-1/8	2-5/16	58,800#
7/8	ID-187-N	ID-187-V	IS-187	1-7/16	1-7/8	10-3/16	3-5/16	13/16	1-1/4	2-5/8	79,600#
1	ID-199-N	ID-199-V	IS-199	1-3/4	2-1/4	12-3/16	4-11/64	15/16	1-1/2	3-1/2	103,400#
1-1/8	ID-1112-N	ID-1112-V	IS-1112	2-1/8	2-3/4	14-5/8	5-11/64	1-1/8	1-5/8	3-3/4	130,000#
1-1/4	ID-1125-N	ID-1125-V	IS-1125	2-1/4	3	16-7/8	4-7/8	1-1/4	1-3/4	4	159,800#
1-3/8	ID-1137-N	ID-1137-V	IS-1137	2-3/4	3-1/2	21-3/8	5-5/32	1-1/2	2	4-1/4	192,000#
1-1/2	ID-1150-N	ID-1150-V	IS-1150	2-3/4	3-1/2	21-3/8	5-5/16	1-3/4	2	4-1/2	228,000#

## INDUSTRIAL SERIES: Clevis Socket with Pin and Cotter Pin

Dimensions in inches



Rope Size	Galvanized Steel	A	B	C	D	E	F	EIPS Breaking Strength*
7/16	PD-143-X	1-1/16	2	7-3/16	2-19/32	1	1	20,400#
1/2	PD-150-X	1-1/16	2	7-3/16	2-19/32	1	1	26,600#
9/16	PD-156-X	1-1/4	2-1/2	8-5/8	3-11/64	1-1/4	1-3/16	33,600#
5/8	PD-162-X	1-1/4	2-1/2	8-5/8	3-11/64	1-1/4	1-3/16	41,200#
3/4	PD-175-X	1-7/16	3	10-3/16	3-11/16	1-1/2	1-3/8	58,800#
7/8	PD-187-X	1-15/16	2-7/8	12-11/16	4-7/8	1-7/8	1-1/2	79,600#
1	PD-199-X	2-3/16	3-5/16	17	5-5/8	1-7/8	1-7/8	103,400#